

医疗保险开放申请

✧ 2016年十一月一号 - 2017年一月三十一号 ✧

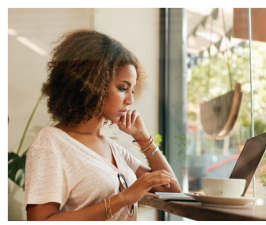


您是否注册了医疗保险？

如果您的年龄介于18至64岁之间，并且住在Prince George's郡，您可以通过州政府建立的医疗保险项目 Maryland Health Connection来注册。您会有机会从各种不同的医疗保险中选择适合您的保险。只有这个项目是为保险费提供税收抵免和折扣。马里兰州百分之九十的居民有资格获得经济援助。避免2017年的税收罚款。浏览和比较2017年医疗保险计划！医疗补助Medicaid全年可以注册。

注册很容易，您需要：

- » 政府签发的含有出生日期的身份证明
- » 社会安全号码
- » 移民/公民文件（适用于部分居民）
- » 如果在工作，工资单或W-2表格和税收文件
- » 您拥有的其他医疗保险的政策号



如何注册

网址: MarylandHealthConnection.gov

致电: 1-855-642-8572 (免费); TTY 1-855-642-8573

寻求Prince George's郡附近面对面的帮助，请访问www.PGHealthConnect.org

或致电301-927-4500来查找地址

使用新的Enroll MHC手机应用程序来选择医疗保险并上传文档。免费应用程序可通过在线应用商店下载。有关Prince George's郡的服务中心位置列表，请参阅此页面的另一侧。



maryland  health
connectionSM
Prince George's 郡的注册地点
(请注意预约和没有预约直接上门的时间)

Department of Social Services (没有预约直接上门)
Hyattsville

6505 Belcrest Road, Hyattsville
Mon. – Fri. 8 am – 4 pm

Landover

425 Brightseat Road, Landover
Mon. – Fri. 8 am – 4 pm

Temple Hills

4235 28th Avenue, Temple Hills
Mon. – Fri. 8 am – 4 pm

Health Department (没有预约直接上门)
Maryland Children's Health Program (MCHP)

425 Brightseat Road, Landover
301-324-2932 or 301-324-2933
Mon. – Fri. 8 am – 3:30 pm

PGC Health Connect Enrollment Center (North)

9109 Central Avenue, Capitol Heights
Hampton Mall – Kingdom Square
240-719-2167
Last customer served one hour before closing.
Tues. – Fri. 9 am – 5 pm
Thurs. 9 am – 7 pm (Walk-in)
Sat. 10 am – 3 pm

PGC Health Connect Enrollment Center (South)
Greater Baden Medical Services

7450 Albert Road, 2nd floor, Brandywine
301-888-2233
Tues. 9 am – 4 pm (Appointment)
Sat. 10 am – 2 pm (Walk-in)

CASA – (预约)

8151 15th Avenue, Hyattsville
301-270-8432 or 240-270-1318
Mon. – Fri. 8 am – 5 pm

Mary's Center (预约)

8908 Riggs Road, Adelphi
301-422-5930
Mon. – Fri. 8:00 am – 4:30 pm

Community Clinic, Inc. (预约)

9220 Springhill Lane, Greenbelt
240-839-5810 – enrollment line
Mon. – Thurs. 8:30 am – 4:30 pm
Fri. 8:30 a.m – 4:00 pm (Walk-in)

Heart to Hand, Inc. (预约)

9701 Apollo Drive, Suite 400, Largo
301-772-0103
Mon. – Fri. 9 am – 4 pm

Sowing Empowerment & Economic Development, Inc. (SEED) (预约)

6201 Riverdale Road, Suite 200, Riverdale
301-458-9808 – to schedule appointment
Mon. 9 am – 3 pm (Walk-in)
Tues. 10 am – 3 pm
Wed. and Thurs. 9 am – 12 pm

Prince George's County Health Connect complies with applicable Federal civil rights laws and does not discriminate on the basis of race, color, national origin, age, disability, or sex.

Prince George's County Health Connect cumple con las leyes federales de derechos civiles aplicables y no discrimina por motivos de raza, color, nacionalidad, edad, discapacidad o sexo.

Prince George's County Health Connect est en conformité avec la loi fédérale de droit civil et ne fait pas de discrimination en matière de race, genre, nationalité d'origine, invalidité ou age.

Help is available in your language: 1-855-642-8572 (TTY: 1-855-642-8573). These services are available for free.

Hay ayuda disponible en su idioma: 1-855-642-8572 (TTY: 1-855-642-8573). Estos servicios están disponibles gratis.

Prince George's 郡Health Connect符合适用的联邦民权法律，不基于种族，肤色，国籍，年龄，残疾或性别而歧视。

我们也用您的语言来帮助您：1-855-642-8572 (TTY: 1-855-642-8573)。这些服务是免费的。



Rashem L. Baker, III
County Executive



www.PGHealthConnect.org



www.facebook.com/PGHealthConnect.org



@PGHealthConnect