



Open Enrollment

✧ November 1, 2016 – January 31, 2017 ✧

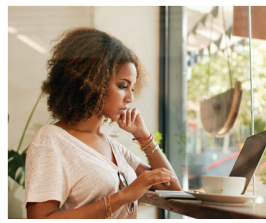


Are You Enrolled in Health Coverage?

If you are between 18 and 64 years of age and live in Prince George's County, you can enroll in coverage through Maryland Health Connection, the state's health insurance marketplace. Choose from a variety of health plans. It's the only place that offers tax credits and discounts to make plans more affordable. Nine out of ten Maryland residents qualify for financial help. Avoid 2017 tax penalties. Browse and compare plans today for 2017 coverage! Medicaid enrollment is year-round.

Enrolling Is Easy, You Will Need:

- » Government issued ID with birth date
- » Social Security Number
- » Immigration/Citizenship Documents (for some residents)
- » If employed, pay stubs or W-2 wage and tax statement
- » Policy numbers for any other health insurance



HOW TO ENROLL

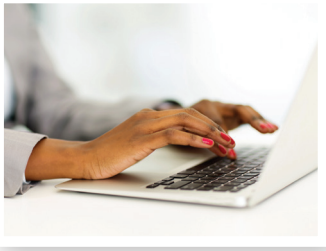
Online: MarylandHealthConnection.gov

Call: **1-855-642-8572 (Toll Free); TTY 1-855-642-8573**

For in person assistance in Prince George's County and enrollment locations near you, visit

www.PGCHHealthConnect.org or call **301-927-4500**

Use the new Enroll MHC mobile app to select plans and upload documents. The free app is available through online app stores. For a list of locations in Prince George's County, see the other side of this page.



Prince George's County Enrollment Locations

(Please pay attention to the times for appointments and walk-ins)

Department of Social Services (Walk – In) Hyattsville

6505 Belcrest Road, Hyattsville
Mon. – Fri. 8 am – 4 pm

Landover

425 Brightseat Road, Landover
Mon. – Fri. 8 am – 4 pm

Temple Hills

4235 28th Avenue, Temple Hills
Mon. – Fri. 8 am – 4 pm

Health Department (Walk – In) Maryland Children's Health Program (MCHP)

425 Brightseat Road, Landover
301-324-2932 or 301-324-2933
Mon. – Fri. 8 am – 3:30 pm

PGC Health Connect Enrollment Center (North)

9109 Central Avenue, Capitol Heights
Hampton Mall – Kingdom Square
240-719-2167
Last customer served one hour before closing.
Tues. – Fri. 9 am – 5 pm
Thurs. 9 am – 7 pm (Walk-in)
Sat. 10 am – 3 pm

PGC Health Connect Enrollment Center (South) Greater Baden Medical Services

7450 Albert Road, 2nd floor, Brandywine
301-888-2233
Tues. 9 am – 4 pm (Appointment)
Sat. 10 am – 2 pm (Walk-in)

CASA – (Appointment)

8151 15th Avenue, Hyattsville
301-270-8432 or 240-270-1318
Mon. – Fri. 8 am – 5 pm

Mary's Center (Appointment)

8908 Riggs Road, Adelphi
301-422-5930
Mon. – Fri. 8:00 am – 4:30 pm

Community Clinic, Inc. (Appointment)

9220 Springhill Lane, Greenbelt
240-839-5810 – enrollment line
Mon. – Thurs. 8:30 am – 4:30 pm
Fri. 8:30 a.m – 4:00 pm (Walk-in)

Heart to Hand, Inc. (Appointment)

9701 Apollo Drive, Suite 400, Largo
301-772-0103
Mon. – Fri. 9 am – 4 pm

Sowing Empowerment & Economic Development, Inc. (SEED) (Appointment)

6201 Riverdale Road, Suite 200, Riverdale
301-458-9808 – to schedule appointment
Mon. 9 am – 3 pm (Walk-in)
Tues. 10 am – 3 pm
Wed. and Thurs. 9 am – 12 pm

Prince George's County Health Connect complies with applicable Federal civil rights laws and does not discriminate on the basis of race, color, national origin, age, disability, or sex.

Prince George's County Health Connect cumple con las leyes federales de derechos civiles aplicables y no discrimina por motivos de raza, color, nacionalidad, edad, discapacidad o sexo.

Prince George's County Health Connect est en conformité avec la loi fédérale de droit civil et ne fait pas de discrimination en matière de race, genre, nationalité d'origine, invalidité ou age.

Help is available in your language: 1-855-642-8572 (TTY: 1-855-642-8573). These services are available for free.

Hay ayuda disponible en su idioma: 1-855-642-8572 (TTY: 1-855-642-8573). Estos servicios están disponibles gratis.

L'aide est disponible dans votre langue: 1-855-642-8572 (TTY: 1-855-642-8573). Ces services sont disponibles gratuitement.



Rashem L. Baker, III
County Executive



Prince George's County
Department of Social Services



www.PGCHealthConnect.org



www.facebook.com/PGCHealthConnect.org



@PGHealthConnect