

Life Happens:

Get Covered Outside of Open Enrollment

You can enroll in or change health insurance plans at any time of the year if you experience a major life event or a special circumstance, called a "qualifying life event."

So, what counts as a qualifying life event?



Getting married or divorced



Moving into or out of Maryland, or some moves within Maryland



Having or adopting a baby



Losing existing health coverage



Turning 26 and moving off of your parent's insurance plan

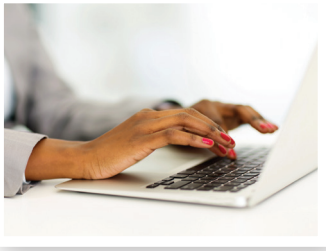


Certain changes in income

Even if you already have coverage through Maryland Health Connection, some of these changes may affect the coverage or financial help you're eligible for. In most cases, you have 60 days from the life event to enroll in new coverage if you qualify.

You can enroll in Medicaid year-round if you qualify, even if you haven't experienced a major life change.





Prince George's County Enrollment Locations

(Please pay attention to the times for appointments and walk-ins)

Department of Social Services (Walk – In) Hyattsville

6505 Belcrest Road, Hyattsville
Mon. – Fri. 8 am – 4 pm

Landover

425 Brightseat Road, Landover
Mon. – Fri. 8 am – 4 pm

Temple Hills

4235 28th Avenue, Temple Hills
Mon. – Fri. 8 am – 4 pm

Health Department (Walk – In) Maryland Children's Health Program (MCHP)

425 Brightseat Road, Landover
301-324-2932 or 301-324-2933
Mon. – Fri. 8 am – 3:30 pm

PGC Health Connect Enrollment Center (North)

9109 Central Avenue, Capitol Heights
Hampton Mall – Kingdom Square
240-719-2167
Last customer served one hour before closing.
Tues. – Fri. 9 am – 4 pm (Appointment)
Thurs. 9 am – 4 pm (Walk-in)
Sat. 9 am – 12 noon

PGC Health Connect Enrollment Center (South) Greater Baden Medical Services

7450 Albert Road, 2nd floor, Brandywine
301-888-2233
Tues. 9 am – 4 pm (Appointment)

CASA – (Appointment)

8151 15th Avenue, Hyattsville
301-270-8432 or 240-270-1318
Mon. – Fri. 8 am – 5 pm

Mary's Center (Appointment)

8908 Riggs Road, Adelphi
301-422-5930
Mon. – Fri. 8:00 am – 4:30 pm

Community Clinic, Inc. (Appointment)

9220 Springhill Lane, Greenbelt
240-839-5810 – enrollment line
Mon. – Thurs. 8:30 am – 4:30 pm
Fri. 8:30 a.m – 4 pm (Walk-in)

Heart to Hand, Inc. (Appointment)

9701 Apollo Drive, Suite 400, Largo
301-772-0103
Mon. – Fri. 9 am – 4 pm

Sowing Empowerment & Economic Development, Inc. (SEED) (Appointment)

6201 Riverdale Road, Suite 200, Riverdale
301-458-9808 – to schedule appointment
Mon. 9 am – 3 pm (Walk-in)
Tuesday 10 am – 3 pm (Appointment Only)

Prince George's County Health Connect complies with applicable Federal civil rights laws and does not discriminate on the basis of race, color, national origin, age, disability, or sex.

Prince George's County Health Connect cumple con las leyes federales de derechos civiles aplicables y no discrimina por motivos de raza, color, nacionalidad, edad, discapacidad o sexo.

Prince George's County Health Connect est en conformité avec la loi fédérale de droit civil et ne fait pas de discrimination en matière de race, genre, nationalité d'origine, invalidité ou age.

Help is available in your language: 1-855-642-8572 (TTY: 1-855-642-8573). These services are available for free.

Hay ayuda disponible en su idioma: 1-855-642-8572 (TTY: 1-855-642-8573). Estos servicios están disponibles gratis.

L'aide est disponible dans votre langue: 1-855-642-8572 (TTY: 1-855-642-8573). Ces services sont disponibles gratuitement.



Rashern L. Baker, III
County Executive



Prince George's County
Department of Social Services



www.PGHealthConnect.org



www.facebook.com/PGHealthConnect.org



@PGHealthConnect