



# Open Enrollment

✦ November 1, 2017 - December 15, 2017 ✦

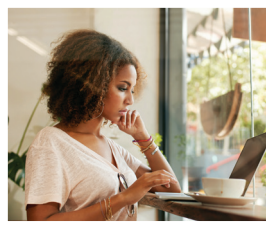


## Are You Enrolled in Health Coverage?

If you are between 18 and 64 years of age and live in Prince George's County, you can enroll in coverage through Maryland Health Connection, the state's health insurance marketplace. Choose from a variety of health plans. It's the only place that offers tax credits and discounts to make plans more affordable. Nine out of ten Maryland residents qualify for financial help. Avoid 2018 tax penalties. Browse and compare plans today for 2018 coverage! Medicaid and the Maryland Children's Health Program (MCHP) enrollment is year-round.

### Enrolling Is Easy, You Will Need:

- » Government issued ID with birth date
- » Social Security Number
- » Immigration/Citizenship Documents (for some residents)
- » If employed, pay stubs or W-2 wage and tax statement
- » Policy numbers for any other health insurance



## HOW TO ENROLL

Online: [MarylandHealthConnection.gov](http://MarylandHealthConnection.gov)

Call: **1-855-642-8572 (Toll Free); TTY 1-855-642-8573**

For in person assistance in Prince George's County and enrollment locations near you, visit

**[www.PGCHHealthConnect.org](http://www.PGCHHealthConnect.org)** or call **301-927-4500**

Use the new Enroll MHC mobile app to select plans and upload documents. The free app is available through online app stores. For a list of locations in Prince George's County, see the other side of this page.





# Prince George's County Enrollment Locations

(Please pay attention to the times for appointments and walk-ins )

## DEPARTMENT OF SOCIAL SERVICES (Walk – In) SITES

### Hyattsville

6505 Belcrest Road, Hyattsville  
Monday-Friday: 8 a.m. – 4 p.m.

### Landover

425 Brightseat Road, Landover  
Monday-Friday: 8 a.m. – 4 p.m.

### Temple Hills

4235 28th Avenue, Temple Hills  
Monday-Friday: 8 a.m. – 4 p.m.

### Health Department (Walk – In) Maryland Children's Health Program (MCHP)

425 Brightseat Road, Landover  
Monday-Friday: 8 a.m. – 3:30 p.m.

## COMMUNITY-BASED SITES

### CASA – (Appointment)

8151 15th Avenue, Hyattsville  
301-270-8432 or 240-270-1318  
Monday-Friday: 8 a.m. – 5 p.m.

### Sowing Empowerment & Economic Development, Inc. (SEED) (Appointment)

6201 Riverdale Road, Suite 200, Riverdale  
301-458-9808 – to schedule appointment  
Monday 9 a.m. – 3 p.m. (Walk-in)  
Tuesday 10 a.m. – 3 p.m.  
Wednesday and Thursday 9 a.m. – 12 p.m.

## PGC HEALTH CONNECT STOREFRONT ENROLLMENT SITES

### Hampton Mall (Appointment)

9109 Central Avenue, Capitol Heights  
240-719-2167 (Appointment)  
Monday – Friday: 9 a.m. – 4 p.m.  
After Oct. 16, 2017– Closed on Monday  
Tuesday – Friday: 9 a.m. – 4 p.m.  
Wednesday: 9 a.m. – 7 p.m. (Walk-in)  
Saturday: 10 a.m. – 3 p.m.

### LaUnion Mall (Walk-In)

**Langley Park Multi-Service Center**  
1401 East University Boulevard / Suite G1  
Hyattsville, MD 20783  
Monday – Friday: 9 a.m. – 4 p.m.  
After Oct. 16, 2017– Closed on Friday  
Monday – Wednesday: 9 a.m. – 4 p.m.  
Thursday: 9 a.m. – 7 p.m.  
Saturday: 10 a.m. – 3 p.m.

**PGC Health Connect  
Call Center  
301-927-4500  
Monday – Friday  
8:30 a.m. - 4:30 p.m.**

Prince George's County Health Connect complies with applicable Federal civil rights laws and does not discriminate on the basis of race, color, national origin, age, disability, or sex.

Prince George's County Health Connect cumple con las leyes federales de derechos civiles aplicables y no discrimina por motivos de raza, color, nacionalidad, edad, discapacidad o sexo.

Prince George's County Health Connect est en conformité avec la loi fédérale de droit civil et ne fait pas de discrimination en matière de race, genre, nationalité d'origine, invalidité ou age.

Help is available in your language: 1-855-642-8572 (TTY: 1-855-642-8573). These services are available for free.

Hay ayuda disponible en su idioma: 1-855-642-8572 (TTY: 1-855-642-8573). Estos servicios están disponibles gratis.

L'aide est disponible dans votre langue: 1-855-642-8572 (TTY: 1-855-642-8573). Ces services sont disponibles gratuitement.



Rushern L. Baker, III  
County Executive



[www.PGCHealthConnect.org](http://www.PGCHealthConnect.org)



[www.facebook.com/PGCHealthConnect.org](https://www.facebook.com/PGCHealthConnect.org)



[@PGHealthConnect](https://twitter.com/PGHealthConnect)