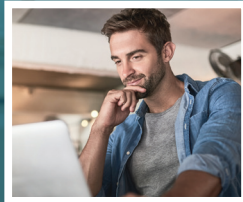




Open Enrollment

NOVEMBER 1, 2018 THRU
DECEMBER 15, 2018



Questions About Health Insurance?

You are not alone. If you are between 18 and 64 years of age, you may qualify for health coverage under the Affordable Care Act (ACA) through Maryland Health Connection, the state's official health insurance marketplace. It's the only place to get tax credits and discounts to make health plans more affordable. In fact, 9 out of 10 Marylanders who enroll through Maryland Health Connection qualify for lower costs. If you are eligible for Medicaid, you can enroll any time of the year.

Call or visit us today to shop and compare plans. Come to one of our enrollment sites in Prince George's County and talk with our trusted, bilingual experts, who will work with you, one-on-one to get the best price for you and your family. Best of all, our services are free!

Enrolling Is Easy, You Will Need:

- » Government issued ID with birth date
- » Social Security Number
- » Immigration/Citizenship Documents (for some residents)
- » If employed, pay stubs or W-2 wage and tax statement
- » Policy numbers for any other health insurance



HOW TO ENROLL

Online: MarylandHealthConnection.gov

Call: **1-855-642-8572 (Toll Free);**

Relay users dial 711

For in person assistance in Prince George's County and enrollment locations near you, visit www.PGHealthConnect.org or call **301-927-4500**

Download the free mobile app Enroll MHC to select plans and upload documents.



NOTE: Maryland Health Connection does not have short-term limited duration health plans (STLD), which are limited to 90 days in Maryland, and do not cover individuals with pre-existing conditions.

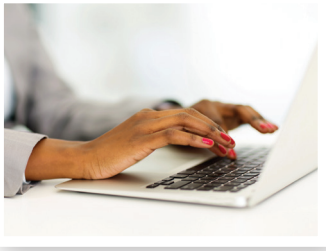
Maryland Health Benefit Exchange complies with applicable Federal civil rights laws and does not discriminate on the basis of race, color, national origin, age, disability, or sex.



www.PGHealthConnect.org

www.facebook.com/PGHealthConnect.org

[@PGHealthConnect](https://twitter.com/PGHealthConnect)



Prince George's County Enrollment Locations

(Please pay attention to the times for appointments and walk-ins)

DEPARTMENT OF SOCIAL SERVICES (Walk – In) SITES

Landover

425 Brightseat Road, Landover, MD
Monday – Friday - 8:00am – 4:00pm

Hyattsville

6505 Belcrest Road, Hyattsville, MD
Monday – Friday - 8:00am – 4:00pm

Temple Hills

4235 28th Avenue, Temple Hills, MD
Monday – Friday - 8:00am – 4:00pm

Health Department (MCHP)

Maryland Children's Health Insurance Program

425 Brightseat Road, Room 101C, Landover, MD
Monday – Friday - 8:00am – 4:00pm

Sowing Empowerment & Economic Development, Inc. (SEED)

6201 Riverdale Rd., Suite 200, Riverdale, MD
Monday - 9:00 am – 3:00pm (Walk-in)
Tuesday - 10:00 am – 3:00pm (Appointment only)
301-458-9808

CASA – (Appointment)

8151 15th Ave., Hyattsville, MD 20783
301-270-8432 or 240-270-1318
Monday – Friday - 8:00am – 5:00pm

PGC Health Connect Enrollment Center

9109 Central Avenue, Capitol Heights, MD
Closed on Monday
Tuesday – Friday - 9:00am – 4:00pm
Wednesday 9:00am – 6:00pm
Saturday 10:00am – 3:00pm
240-719-2167

La Union Mall

Langley Park Multi Service Center

1401 East University Boulevard/Suite G1
Hyattsville, MD
Closed on Friday
Monday - Wednesday 9:00am - 4:00pm
Thursday - 9:00am – 6:00pm
Saturday - 10:00am – 3:00pm

**For more information:
PGC Health Connect
Call Center
301.927.4500**

**Monday-Friday
8:30am- 5:00pm**

Prince George's County Health Connect complies with applicable Federal civil rights laws and does not discriminate on the basis of race, color, national origin, age, disability, or sex.

Prince George's County Health Connect cumple con las leyes federales de derechos civiles aplicables y no discrimina por motivos de raza, color, nacionalidad, edad, discapacidad o sexo.

Prince George's County Health Connect est en conformité avec la loi fédérale de droit civil et ne fait pas de discrimination en matière de race, genre, nationalité d'origine, invalidité ou age.

Help is available in your language: 1-855-642-8572 (TTY: 1-855-642-8573). These services are available for free.

Hay ayuda disponible en su idioma: 1-855-642-8572 (TTY: 1-855-642-8573). Estos servicios están disponibles gratis.

L'aide est disponible dans votre langue: 1-855-642-8572 (TTY: 1-855-642-8573). Ces services sont disponible gratuitement.



www.PGHealthConnect.org

www.facebook.com/PGHealthConnect.org

[@PGHealthConnect](https://twitter.com/PGHealthConnect)